

# 3D Instant Website

## SINGLE-CLICK 3D COMMUNICATION

Create and publish live interactive web pages. Instantly.

It's so quick and easy to create and publish your own live web pages with 3D Instant Website. Just a simple mouse click and your 3D interactive pages are on the web. You don't even need any web infrastructure.

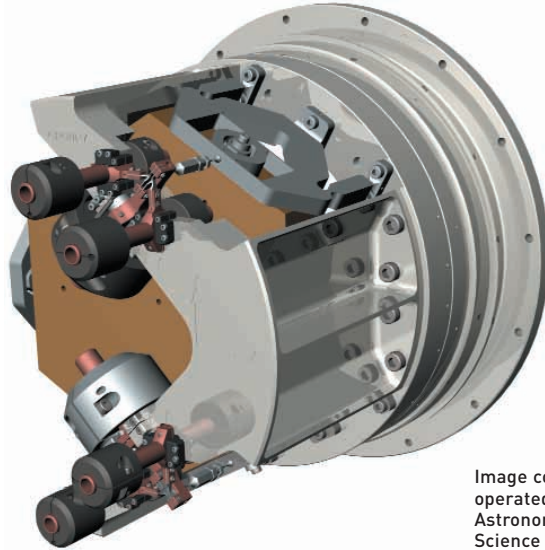


Image courtesy of National Optical Astronomy Observatory, operated by the Association of Universities for Research in Astronomy, under cooperative agreement with the National Science Foundation.

### Web communication made easy.

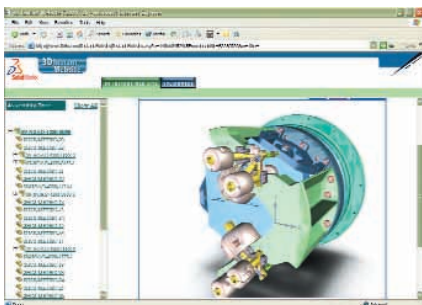
3D Instant Website is a giant step forward in 3D design communication via the web. It's never been simpler to communicate with your entire work team – other designers, manufacturing staff, marketing management, purchasing agents, suppliers, and customers. Publish your designs instantly, and with email you can easily notify everyone who needs to refer to those designs. Provide the visual information they need to give you important “instant” feedback.

### Interactive. Not static.

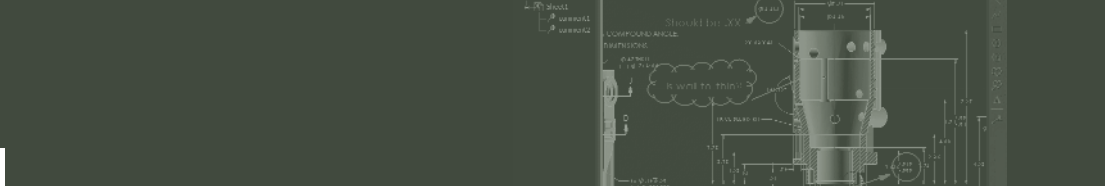
Wait until your colleagues see the visuals on your web site. Not static 2D images, but 3D models they can view, rotate, zoom, and pan without having to buy CAD software or install special viewers. Visitors to your password-protected site can truly get an accurate look at your product designs. No other web publishing solution gives SolidWorks® 3D mechanical design software users as much power coupled with such simplicity. Imagine what you can do. Share 3D design concepts with anyone, anywhere. Receive instantaneous departmental suggestions and approvals. Suddenly, communication with your extended design team is just a click away.

### No web server needed. No additional software.

As a SolidWorks user, you have a choice. Publish your designs to a web site hosted by SolidWorks Corporation, or publish locally using your organization's web resources. Choosing the SolidWorks-hosted web site eliminates the need to have any web server infrastructure. In addition, SolidWorks provides unique automation wizards that download and install all the software needed to publish your web site, automatically. Visiting your site is also convenient because there's no need for guests to manually download or install any additional viewers or other software.



Visitors to your web site can view, rotate, zoom, and pan 3D models without installing additional viewers or CAD software.



### eDrawings-empowered.

You can also publish your 2D detail drawings to the web. The popular eDrawings file format combines the power of 2D and 3D and offers unique drawing interpretation tools, including 3D cross hair, animation, hyperlinked views, virtual folding, and zooming/panning. You can now focus attention on multiple subsets of the drawing at one time, smoothly navigate among the views, identify and match geometry in multiple views, and more.

### Customizable templates.

Beginner or web guru, you will benefit from 3D Instant Website's powerful, easy-to-use templates for publishing your design work. These customizable templates and style sheets use open XML and XSL standards, so even users with limited programming and web design experience can easily create and modify the templates, adding new data to the web pages and deciding how that data is best displayed. 3D Instant Website includes three sample templates:

- Basic Template – Enables you to enter web page titles, design descriptions, related web links, and company information.
- Collaborative Template – Allows you to invite anyone with a web browser to review and comment on the design. The invited reviewers can then accept or reject the design concepts as well as provide comments that are automatically added to the web page.
- Tree Template – Lets you display an assembly tree of your model. Select, hide, explode components to fully explore a complex design.

### Viewing formats.

You can choose from a variety of formats to publish designs. The viewers are automatically downloaded and installed, so there's no need to purchase or download any additional software in order to view models. 3D Instant Website supports multiple 3D interactive viewing formats:

- CATweb
- eDrawings
- HOOPS
- JPEG
- RealityWave
- Viewpoint

Together, these formats support communication of 2D drawings and 3D designs, on multiple browsers, on Windows® and UNIX® operating systems.

Corporate Headquarters  
SolidWorks Corporation  
300 Baker Avenue  
Concord, MA 01742  
Phone: +1-800-693-9000  
Outside the U.S.: +1-978-371-5011  
Fax: +1-978-371-7303  
Email: [info@solidworks.com](mailto:info@solidworks.com)

European Headquarters  
SolidWorks Europe  
Parc du Relais – Bât. D  
201, Route de la Seds  
Vitrolles 13127, France  
Phone: +33 4 42 15 03 85  
Fax: +33 4 42 75 31 94  
Email: [info@solidworks-europe.com](mailto:info@solidworks-europe.com)

SolidWorks Asia Pacific  
Penthouse Level, Suntec  
Tower Three  
8 Temasek Boulevard  
Singapore 038988  
Phone: +65 6866 3885  
Fax: +65 6866 3838  
Email: [info@solidworks-ap.com](mailto:info@solidworks-ap.com)

